

### APPARATUS FOR INTRODUCING GENE FOR SUCH

Publication number: JP62171687

Publication date: 1987-07-28

Inventor: SOGAWA KOJI; IMAI KATSUYUKI; TODA KENZO; TAKAYAMA SHINICHIRO; MOCHIZUKI TAKANORI; KOGA MAMORU

Applicant: SHIMADZU CORP

Classification:

- international: C12N15/09; C12M1/00; C12M1/42; C12N13/00; C12N15/00; C12N15/87; C12N15/09; C12M1/00; C12M1/42; C12N13/00; C12N15/00; C12N15/87; (IPC1-7): C12M1/00; C12N13/00; C12N15/00

- European:

Application number: JP19850297866 19851228

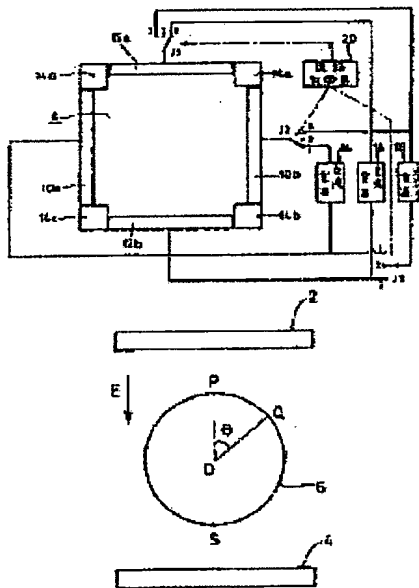
Priority number(s): JP19850297866 19851228

Report a data error here

#### Abstract of JP62171687

PURPOSE: To improve introducing efficiency of gene, etc., by arranging plate electrodes in square shape, and connecting the electrodes with an AC power source to intermittently imposing AC electric field having different phases to a pair of opposite electrodes and with a DC power source.

CONSTITUTION: Pairs of opposite electrodes 10a, 10b, 12a and 12b are imposed with an AC electric field to rotate cells and them imposed with a DC electric field E to increase the permeability of cell membrane in a region making an angle theta of 0 or pi radian between the DC electric field E. Subsequently, an AC electric field is imposed to the opposite electrodes 10a, 10b, 12a and 12b to rotate the cell and again a DC electric field is imposed to increase the permeability of cell membrane different from the region of the previous treatment. The permeability of the cell can be increased at plural points by repeating the operation comprising the rotation of the cell and imposition of DC electric field. The introduction efficiency of gene, etc., can be improved by this process.



Data supplied from the esp@cenet database - Worldwide